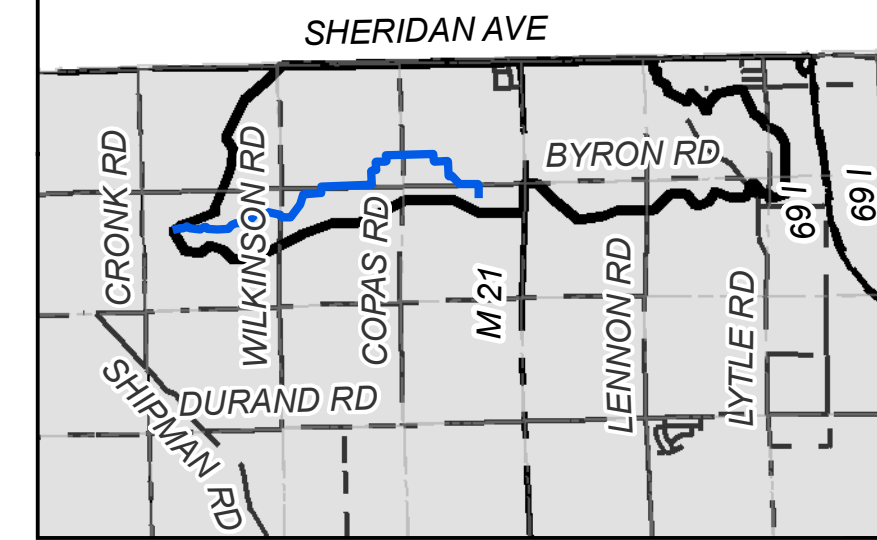


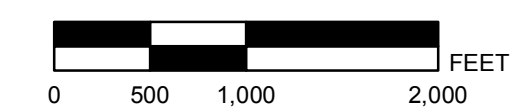
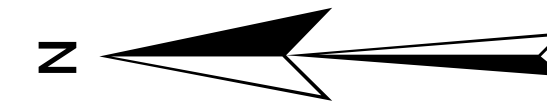
THOMPSON DRAIN - NO. 466

SHIAWASSEE COUNTY, MICHIGAN

SHIAWASSEE COUNTY DRAIN COMMISSIONER - ANTHONY NEWMAN



AREA MAP
NOT TO SCALE



LEGEND

- LAND RECOMMENDED TO BE REMOVED
- LAND RECOMMENDED TO BE ADDED
- HISTORIC DISTRICTS BOUNDARY
- PROPOSED DRAINAGE DISTRICT BOUNDARY
- APPROXIMATE DRAIN LOCATION**
- OPEN DRAIN
- TILE DRAIN
- OUTLET AND TRIBUTARY DRAINS**
- OPEN
- TILE

DRAINAGE DISTRICT BREAKDOWN
PROPERTY OWNERS ASSESSABLE ACREAGE

VENICE TOWNSHIP 3,384 AC.

TOTAL ACREAGE IN DISTRICT 3,384 AC.

LENGTH OF DRAIN
THOMPSON DRAIN 17,740 FT.

RAH	DAY OF REVIEW OF APPOINTMENTS	XXXX/XXXX
BY	MARK	REVISIONS DATE

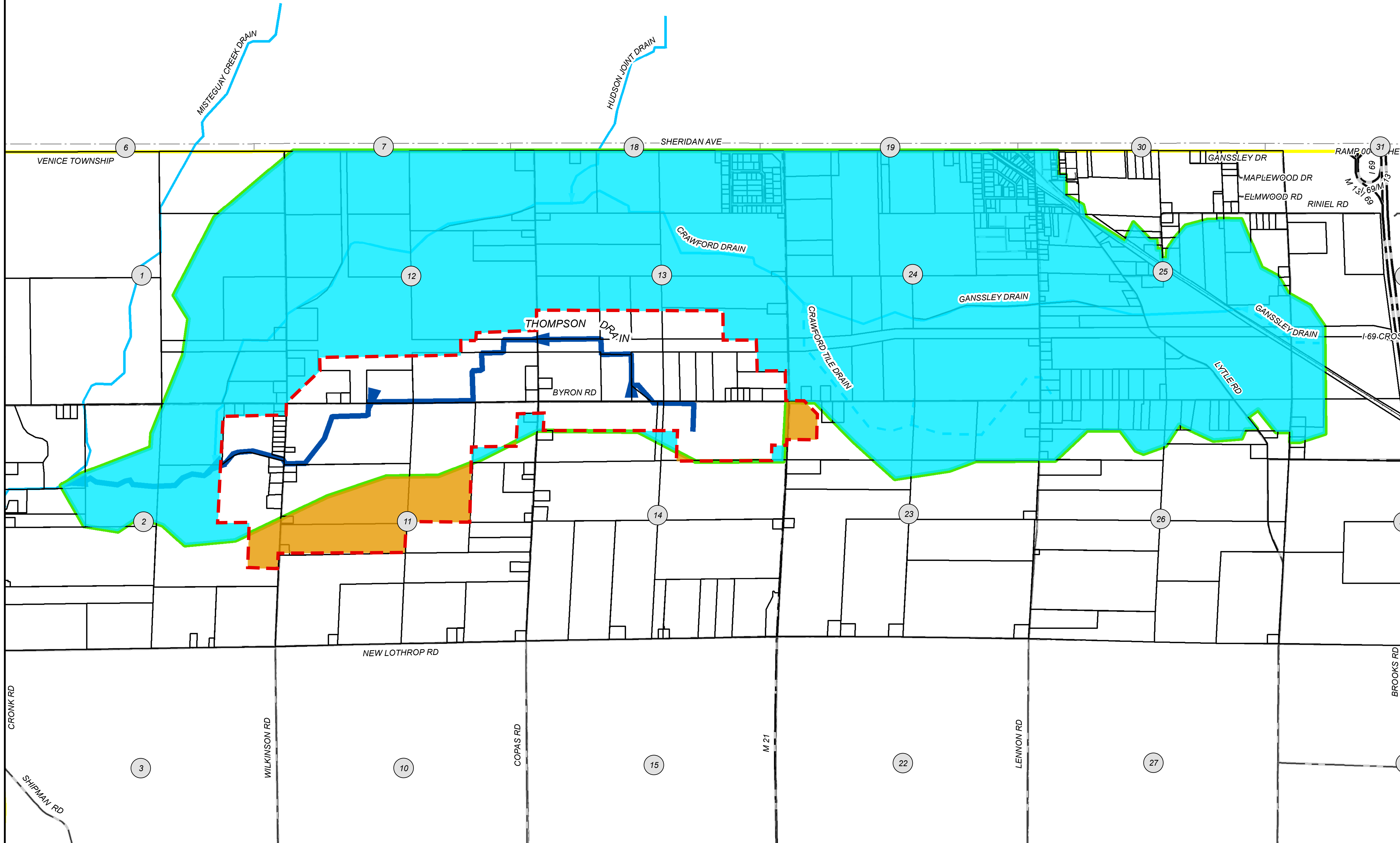
THE WORK REPRESENTED BY THIS DRAWING WAS DESIGNED BY THE ENGINEER FOR THIS SPECIFIC APPLICATION AND SPECIFIC LOCATION DESCRIBED HEREIN IN ACCORDANCE WITH THE CONDITIONS PREVALENT AT THE TIME THE DESIGN WAS DONE. THE ENGINEER DOES NOT GUARANTEE AND WILL NOT BE LIABLE FOR ANY OTHER LOCATION, CONDITION, DESIGN OR PURPOSE.

THOMPSON DRAIN - NO. 466
SHIAWASSEE COUNTY, MICHIGAN

**PROPOSED DRAINAGE
DISTRICT MAP**

LSG Engineers
& Surveyors
exceptional service

DE. BY: RAH	CH. BY: RAH	PROJECT NO.
DR. BY: RAH	APP. BY: ADB	1087-466
STDS.	SHEET COVER	DR
DATE: AUGUST 2015	FILE NO.	1
SCALE: 1" = 1,000'		



PATH: C:\COUNTY_GIS\SHIAWASSEE\COUNTY\DRAWING\MAPS\THOMPSON DRAIN 466.DWG, PRINTED ON: 8/19/2015, BY: HQEFT