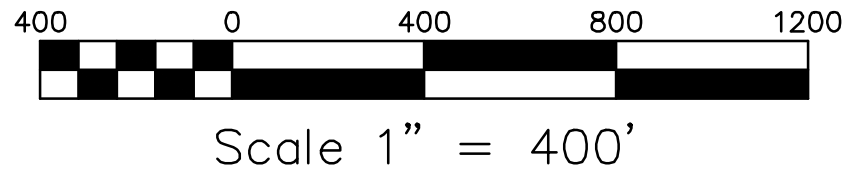


MAP OF JORDAN DRAIN #248 DRAINAGE DISTRICT

SECTION 31, SHIAWASSEE TOWNSHIP,
SECTION 6, ANTRIM TOWNSHIP
SHIAWASSEE COUNTY, MICHIGAN

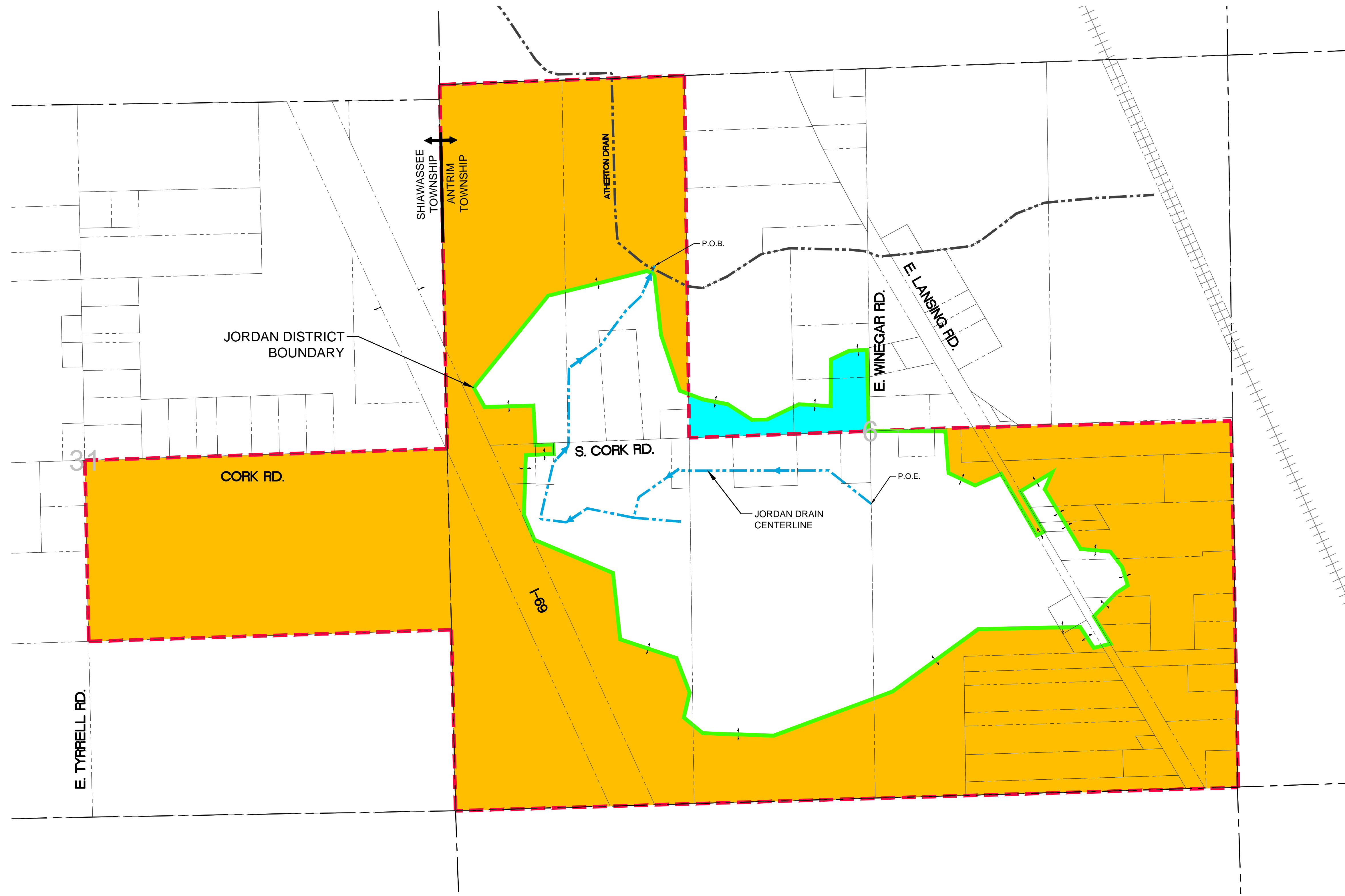
DATE	DESCRIPTION	BY
REVISIONS/SUBMITTALS		



LEGEND

- PROPOSED DISTRICT BOUNDARY
- - - HISTORIC DISTRICT BOUNDARY
- · - · - ROUTE AND COURSE
- LANDS RECOMMENDED TO BE ADDED TO THE DISTRICT
- LANDS RECOMMENDED TO BE REMOVED FROM THE DISTRICT

NOTE:
THE PROPOSED DISTRICT IS BASED ON TOPOGRAPHY
AND THE HISTORIC DISTRICT IS FROM A FINAL
ORDER OF DETERMINATION DATED AUGUST 9, 1895.



FILE: L:\1087 (SHIAWASSEE CO. DRAIN MAPS)\248 (JORDAN)\248_JORDAN.DWG - PLOT DATE: 8/18/2015 3:37 PM BY: Shannon Pugh SCALE: 1:1

PREPARED FOR:
ANTHONY NEWMAN
SHIAWASSEE COUNTY
DRAIN COMMISSIONER
149 CORUNNA AVE. L-1
CORUNNA, MICHIGAN 48817
PHONE: (989) 743-2398

ZSG
Engineers
& Surveyors

3135 PINE TREE ROAD
SUITE D
LANSING, MI 48911
PH. (517) 393-2902
FAX (517) 393-2608

DATE	APRIL 21, 2015
PROJECT NO.	1087
SHEET NO.	1 OF 1

**JORDAN
DRAIN #248**